

MasterLife WP 1000

Self-healing, integral crystalline waterproofing admixture in powder for durable concrete. Following EN 934-2:T9.

DESCRIPTION AND WHERE TO USE

MasterLife WP 1000 is a specific integral crystalline waterproofing admix to be added to the concrete mix, to impart waterproofing properties due to active chemicals that react with the moisture in fresh concrete to generates a non-soluble crystalline formation throughout the capillary pores of cement matrix.

MasterLife WP 1000 consists of Portland cement, selected filler and fine sand and various active, proprietary chemicals that react with water and moisture higher that 95% closing and sealing capillary porosity and micro-cracks lower that 0,4 mm.

The use of MasterLife WP 1000 is advised where a waterproof concrete is required, durable to deterioration due to harsh environmental conditions that resists to hydrostatic pressure from either positive or negative surface of the concrete slabs.

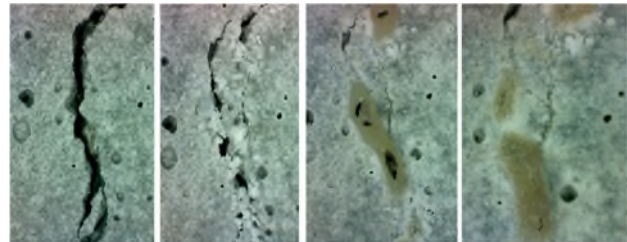
TYPICAL APPLICATIONS

The use of MasterLife WP 1000 is recommended in the following applications:

- reservoirs of potable and non potable water
- swimming pools
- underwater structures
- depurators
- foundation work, slabs and retaining walls
- residential and non residential parking structures
- dams and dykes
- harbors and docks
- sewers, tunnels and canals
- tunnels and subway systems

BENEFITS

MasterLife WP 1000 becomes an integral part of the cement matrix giving waterproofing properties to concrete, thanks to a crystalline formation throughout the capillary pores. Reaction proceed in water since the early stages from 7 to 28 days and on, with the closing and sealing of micro-cracks, reducing permeability and improving the durability of concrete.



Fessurazione iniziale 7 giorni 28 giorni 60 giorni
Trattamento in acqua

DOSAGE

The dosage of MasterLife WP 1000 can range from 1 to 2 kg by weight of cement.

Other dosages may be recommended in special cases according to specific job site conditions.

In such cases please consult our Technical Service Department for advice.

DIRECTIONS FOR USE

MasterLife WP 1000 can be loaded preferably during the aggregates load on the loading belt in the ready mix plant. We advise to mix for 5 min. in order to assure a homogeneous concrete.

Avoid the addition on premixed-wet concrete.

COMPATIBILITY

MasterLife WP 1000 is compatible with all admixtures of MasterPozzolith, MasterRheobuild e MasterGlenium series.



We create chemistry

MasterLife WP 1000

Self-healing, integral crystalline waterproofing admixture in powder for durable concrete. Following EN 934-2:T9.

Technical Information	
Form	Grey powder
Bulk Density (g/cm ³)	1.025 – 1.225
Uncompacted Bulk Density (g/cm ³)	0.670 – 0.870

PACKAGING AND STORAGE

MasterLife WP 1000 is available in 20 kg bags.
Store the product in a dry and sheltered place. Do not use the product if bag is damaged.
If stored in unopened bags the shelf life is 18 months.

SAFETY INSTRUCTION

It is recommended that gloves be worn when using the product.

From 16/12/1992 BASF Construction Chemicals Italia Spa operates under the Quality System in compliance with European Standard UNI-EN ISO 9001. The environmental management system of BASF Construction Chemicals Italia Spa is certified accordingly to UNI EN ISO 14001 and the System of Safety Management is certified accordingly to OHSAS 18001.

BASF Construction Chemicals Italia Spa

Via Vicinale delle Corti, 21 – 31100 Treviso – Italy
T +39 0422 429200 F +39 0422 421802
www.master-builders-solutions.com/it-it
e-mail: infomac@mbcc-group.com

For further information, please consult your local BASF Construction Chemicals Italia Spa representative.

The technical advice on how to use our products, either written or verbally given, are based on the present state of our best scientific and practical knowledge, and no guarantee and/or implicit or explicit responsibility are assumed on final results of works executed by the use of our products.

The owner, his representative, or the contractor is responsible for checking the suitability of our products as to the intended use and aims.

Supersedes all prior issues on this product.

March 2020

