

RT 2000

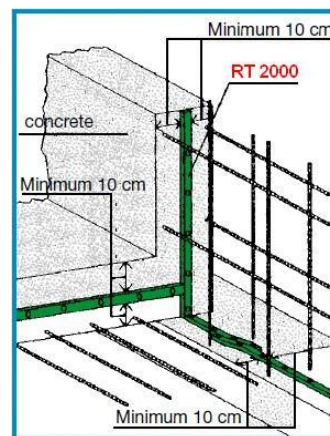
POLYETHYLENE, RUBBER AND RESIN WATERSTOP JOINTS

PRODUCT DESCRIPTION

RT 2000 is a waterstop joint made using Polyethylene, Butyl Rubber, Resin and with elastomeric binders. The special chemical composition renders it wearproof while the RT 2000 expansion strip offers excellent mechanical strength and elasticity, with gradual and controlled expansion on contact with the water. The expansion times have been studied so that fresh cement can be laid without undergoing any deformation. Even after numerous expansion and dehydration cycles, RT 2000 maintains its properties increasing in volume. Thanks to its excellent technical-mechanical properties, RT 2000 does not require an anchoring net. RT 2000 is extremely watertight, with a seal equal to the hydrostatic force a 120 m water column (approx. 12 bar)

TECHNICAL FEATURES

Physical-mechanical properties	Test method	U.M.	Values
• Shore A	ISO 868		40
• Density	ISO 1183	g/cc	1,27
• Tensile strength	ISO 527	N/mm ²	≥ 30
• Elongation to failure	ISO 527	%	≥ 500
• Expansion		%	≥ 500%
• Application temperature	ISO 458/2	C°	- 3°C / + 50°C
• Hydrostatic pressure strength	12 bar (120 m water column)		
• Wear	Unlimited		
• Measurements	20x10 mm.section		
• Colour	Green		
• Test Certificate	174/3/001 SS UNI E07.04.113.0 Tecnoprove s.r.l. Geotechnic and Chemical Laboratory		



FIELD OF USE

- Any type of construction joint.
- Cold shut subject to hydrostatic pressure (approx. 12 bar)
- Sealing joints between concrete and stone, concrete and masonry
- Foundations, tunnel walls and basements, steel and concrete piping, prefabricated elements, etc.
- Steel or concrete prefabricated segments.

INSTALLATION

- Apply the RT 2000 joint in the centre of the wall at least 8/10 cm. shorter than the concrete.
- When large surfaces are involved , two parallel sections must be applied to increase the safety margin.
- The surfaces must be clean, compact, vibrated, and as uniform as possible.
- Use steel nails to fix the RT 2000 with 1 every 15/20 cm, or alternatively polyurethane water-expanding adhesive.
- Do not make any head joints, but always assure a lateral overlapping of at least 5 cm between the sections.

PACKAGING

- Roll length: 8 lm
- Rolls per pack: 6 (a total of 30 lm in each pack)