

# Product overview

CATALOGUE



**Edilfloor**

# geomats and biomats

## What are they ?

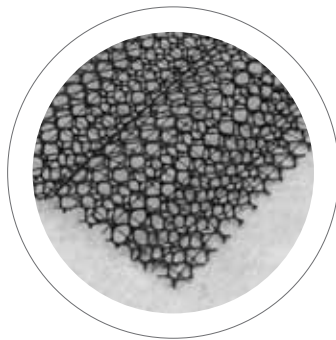
These materials are designed to control soil erosion caused by the elements, such as rainwater, runoff and wind. Geomats and erosion control revegetation mats find application wherever there is a need to retain fine soil particles and ensure successful vegetation growth by encouraging fast germination of grass species.

## Main functions

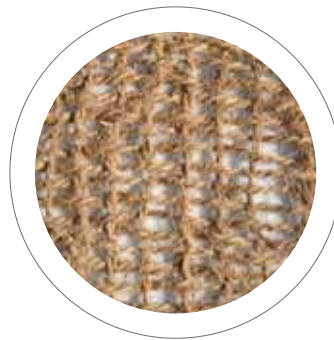


### Erosion control

The erosion, due to the action of water or wind can strongly impact on embankments slopes, rivers banks, drainage channels, and other exposed and inclined areas. The subsequent sedimentation of fine particles may create additional problems as it can interfere with natural drainage. One of the most effective methods to prevent these problems when building slopes is to plant vegetation in order to form a natural and pleasant barrier against erosion.



SintexMat



JuteNet

## they can be used as:

Sloping grounds **defense**

**Protection** of rivers, creeks and channel banks

Coastal **defense**

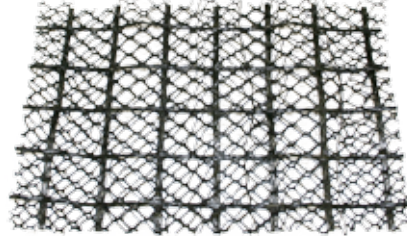
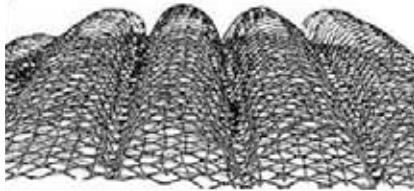
Slopes **vegetation**

**Protection** of road embankments slopes

# SintexMat®



GEOMAT COMPOSED OF THREE EXTRUDED GEOGRIDS FOR EROSION CONTROL.



SintexMat is a synthetic 3D geomat made of three extruded geogrids featuring the following functions: the first allows the product to lie smoothly on the slope, the second provides reinforcement while the third retains the soil fine aggregates. Its quality is regularly tested and it is manufactured according to ISO 9001/2008 standard; it also fulfils the safety requirements of CE marking regulations.

## ADVANTAGES

- **Resistant**, high quality and long-lasting.
- Non-degradable and **lightweight**.
- **Easy to use** and install.
- **The most cost-effective solution** for erosion control
- Highly effective soil retention.
- **Easily adaptable** to most slopes.
- It assures **effective protection** from the moment it is installed.



## APPLICATION EXAMPLE

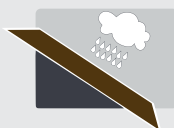


## AVAILABLE SIZES

Type	SintexMat	SintexMat S	R 20-20	R 35-20	R 55-20	R 80-30	R 110-30	R 150-30
Rolls width (m)	2,00							
Rolls length (m)	25							



## FUNCTIONS



EROSION CONTROL

EC - SintexMat provides an erosion control function.

## TECHNICAL SPECIFICATION

**POLYMER:** Polypropylene    **PROCESS:** Extrusion    **COLOUR:** Black

## MECHANICAL PROPERTIES

Type		SintexMat	SintexMat S	R 20-20	R 35-20	R 55-20	R 80-30	R 110-30	R 150-30	
<b>Tensile strength</b> [EN ISO 10319]	MD	kN/m	1,5	11,02	20	35	55	80	110	120
	CMD	kN/m	2,5	8,5	20	20	20	30	30	20
<b>Elongation at maximum load</b> [EN ISO 10319]	MD	%	25	35	<12	<12	<12	<12	<12	<12
	CMD	%	26	35	<12	<12	<12	<12	<12	<12
<b>Precipitation intensity 50 mm/h</b>			2,72	2,72	-	-	-	-	-	-
<b>Precipitation intensity 100 mm/h</b>			3,10	3,10	-	-	-	-	-	-
<b>Precipitation intensity 150 mm/h</b>			3,35	3,35	-	-	-	-	-	-

## PHYSICAL PROPERTIES

<b>Mass per unit area</b> [EN ISO 9864]	g/m <sup>2</sup>	320	395	535	604	720	979	1238	N.D.
<b>Thickness (2kPa)</b> [EN ISO 9863-1]	mm	25	25	20-25	20-25	25	25	20-25	20-25
<b>Undulations number</b>	n	22							
<b>Opening wavy net</b>	mm	10 X 10							

## DURABILITY PROPERTIES

To be covered within 14 days from the installation. Forecast minimum durability of 25 years in natural soil with 4<pH<9 and soil temperature <25°C.

# JuteNet<sup>®</sup>

JUTE BIODEGRADABLE BIOMAT FOR EROSION CONTROL.



Biodegradable biomeshes comprising open-mesh jute fibre weighing from 125 to 500 g/m<sup>2</sup> performing erosion control function, preventing the soil from being washed away and promoting vegetation on the slopes.

## AVAILABLE SIZES

Type	125	500
Tensile strength kN/m [EN ISO 10319]	1/1	20/20
Rolls width (m)	1,40	1,22
Rolls length (m)	250	69

# StrawMat<sup>®</sup>

NATURAL BIODEGRADABLE BIOMAT



Natural biodegradable biomat composed of a film of pure cellulose covered by a layer of chopped straw on which a 65 g/m<sup>2</sup> seed mixture can be distributed; the composition is held together by two continuously stitched micromeshes of photodegradable polypropylene.

## AVAILABLE SIZES

Type	S100PS
Tensile strength kN/m [EN ISO 10319]	0,5/0,5
Rolls width (m)	2,40
Rolls length (m)	25

JuteNet 125



JuteNet 500





Via L. Da Vinci 15 - 36066 Sandrigo - Italy  
Tel. +39 0444.750350 - Fax +39 0444.657246  
info@edilfloor.com - www.edilfloor.com



**TWO BRANDS**  
**ONE FAMILY**